

## Introduction

FileSync is an intuitive file management utility that compares the files on two directory paths and displays a list highlighting the differences.

Two methods of comparison are available:

Timestamps - The last modified times of the files are compared with the assumption that the most recent contains the latest data.

Binary - The files are compared byte by byte and are displayed as equal or unequal. It is then up to the user to decide which one contains the latest data.

The behavior of the comparison methods can be modified by use of the settings on the Compare options.

Once the comparison has been performed the list can be filtered and the files tagged. The files are then synchronised by copying the tagged files from each path to the other to ensure that the most up-to-date copy of the files exists in both paths.

## What's new

### New in this release:

#### Enhancements:

- [Duplicate checking](#) is now optional to improve performance

#### Fixes:

- [Compare on load](#) option now works for profiles specified on the command line when program starts.

### New in version 2.00:

#### Enhancements:

- [Folder inclusion/exclusion](#)
- [Compare on profile load option](#)
- Time remaining and other improvements to progress dialog
- Filter settings saved with profile
- [Time shift target option](#)

#### Fixes:

- Display of progress with files over 40Mb fixed
- Binary compare display fixed
- List no longer displays duplicates

### New in version 1.55:

#### Enhancements:

- Binary compare now displays equality/inequality correctly for files with different timestamps
- Browse button for difference viewer selection added
- Suppress quotes for difference viewer parameters added
- Safe copy switch added
- Skip option in File Overwrite confirmation dialog added
- Facility to change synchronization output path added
- Copy file list to clipboard added
- Write file list to text file added
- Error and warning log added

#### Fixes:

- Saving of incorrect path and file type data under some circumstances has been fixed
- Spin button for “Older than ... days” now works the right way round
- Tickbox now appears for file list entries when the copy direction is overridden

## **New in version 1.5x:**

### **Enhancements:**

- [Binary compare](#)
- [File size compare](#)
- [Ignore older than ...](#)
- [View differences](#)
- [Delete files](#) with Delete key
- Space bar [tagging](#)

### **Fixes:**

- Incorrect 0KB output in report printing fixed
- Target file is no longer destroyed when an error occurs during synchronisation
- Crash when handling invalid Timestamps fixed
- No longer reports an error about root directory creation
- File Attributes now correctly copied

## **New in version 1.42:**

- Problem with creating new folders on UNC targets under Windows 95 fixed.
- Splash screen removed for registered users.

## **New in version 1.4:**

- Synchronisation engine redesigned to work with IE4 desktop integration.
- Now runs under [NT 3.51](#) (with some limited functionality)
- Multi-threading re-introduced and enhanced to improve interface response.
- Source, target and type combo boxes now support Cut, Copy, Paste and undo.
- Free disk space displayed for Source and Target paths.

## **New in version 1.31:**

- File type exclusions
- You can now specify files to exclude from the [comparison](#). See [File Types](#).
- [Filter setting](#) is optionally persistent. See [Options, General](#).
- Problem with filenames starting with “.” (a period) fixed.

## Registration

FileSync is a shareware program and is provided at no charge to the user for evaluation. Feel free to share unlicensed copies with your friends, but please do not give it away altered or as part of another system. The essence of shareware software is to provide personal computer users with quality software without high prices, and yet to provide incentive for programmers to continue to develop new products.

If you find this program useful and find that you continue to use it after a reasonable trial period, you must make a registration payment (see below). This registration fee will license one copy for use on any one computer at any one time. All users will receive a registration key when they register, and free technical support for an unlimited period.

Commercial users must register and pay for their copies within 30 days of first use or their license is withdrawn. Site License arrangements may be made by contacting us at [sales@fileware.co.uk](mailto:sales@fileware.co.uk).

Anyone distributing this product for any kind of remuneration must first contact the [author](#) for authorization.

You are encouraged to pass a copy of this software along to your friends for evaluation, but you must include all files in the original distribution. Please encourage them to register their copy if they find that they make use of it.

Registration is available via **Compuserve's** Software Registration Forum (GO SWREG), registration ID 13975, or on-line, via either the **RegNow**, **ShareIt!** Or **Software Superstore** registration service's secure web servers.

Full details are available on the FileWare web site at <http://www.fileware.co.uk>

Benefits of registration include a clear conscience, product life-time [upgrades](#) and priority email [support](#).

## Upgrades

Upgrades will be available for free download from the FileWare Web Site at <http://www.fileware.co.uk>. All registered users will be notified by email as and when new versions are available.

## **FileSync Help**

[Introduction](#)

[Step by Step](#)

[Registration](#)

[Support](#)

## About FileSync

FileSync is an intuitive file management utility that compares the files on two directory paths and displays a list highlighting the differences.

Two methods of comparison are available:

Timestamps - The last modified times of the files are compared with the assumption that the most recent contains the latest data.

Binary - The files are compared byte by byte and are displayed as equal or unequal. It is then up to the user to decide which one contains the latest data.

The behavior of the comparison methods can be modified by use of the settings on the Compare options.

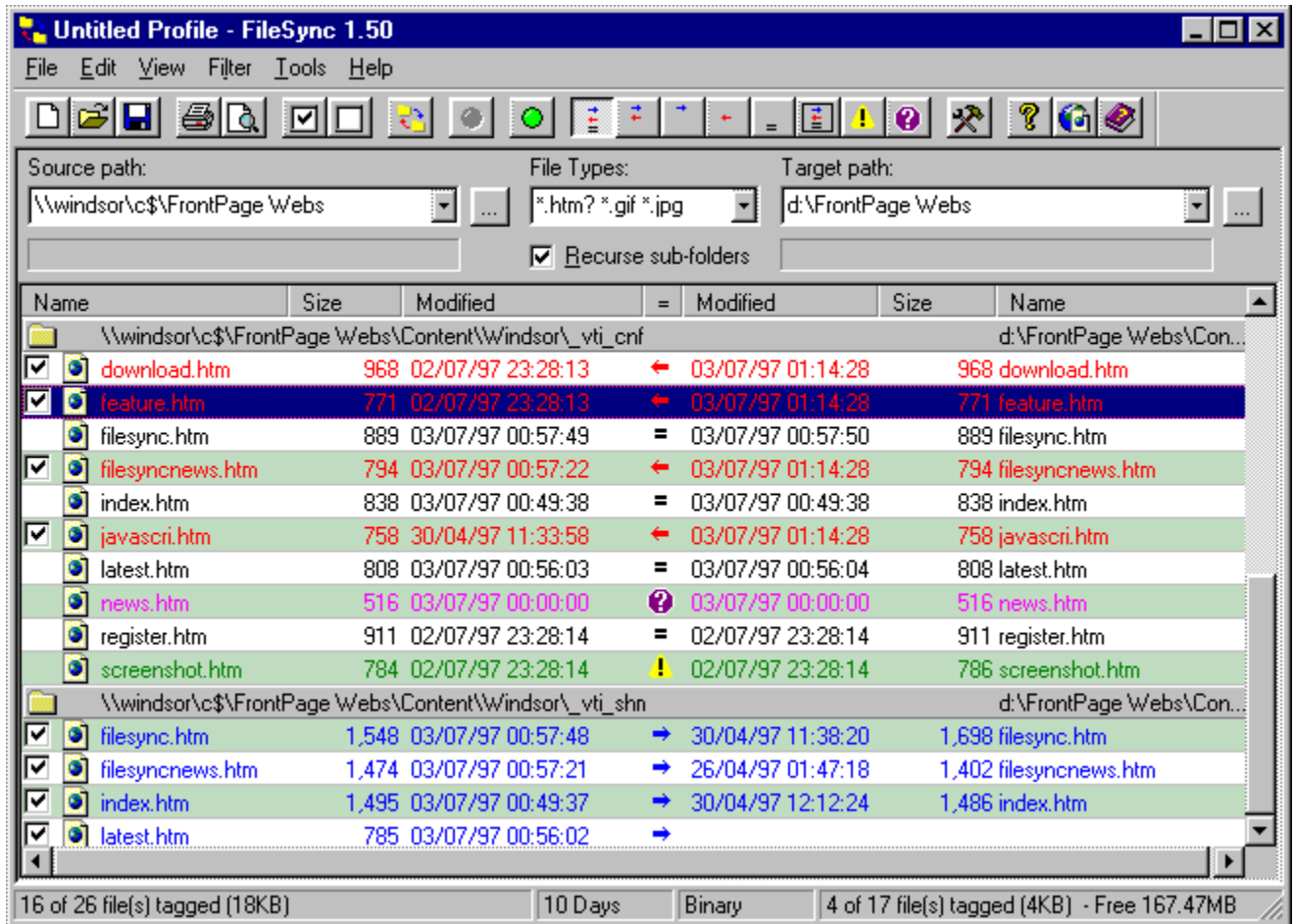
Once the comparison has been performed the list can be filtered and the files tagged. The files are then synchronised by copying the tagged files from each path to the other to ensure that the most up-to-date copy of the files exists in both paths.

## Frequently Asked Questions



## Main Window

This is the FileSync main window display which shows the comparison file list. Click on the area of interest for further information.



The screenshot shows the FileSync 1.50 main window. The title bar reads "Untitled Profile - FileSync 1.50". The menu bar includes File, Edit, View, Filter, Tools, and Help. The toolbar contains various icons for file operations. The main area is divided into three sections: Source path, File Types, and Target path. The Source path is "\\windsor\c\$\FrontPage Webs", File Types is "\*.htm? \*.gif \*.jpg", and Target path is "d:\FrontPage Webs". The "Recurse sub-folders" checkbox is checked. Below this is a comparison table with columns for Name, Size, Modified, and comparison symbols. The table lists files from two folders: "\\windsor\c\$\FrontPage Webs\Content\Windsor\\_vti\_cnf" and "\\windsor\c\$\FrontPage Webs\Content\Windsor\\_vti\_shn". The status bar at the bottom shows "16 of 26 file(s) tagged (18KB)", "10 Days", "Binary", and "4 of 17 file(s) tagged (4KB) - Free 167.47MB".

Name	Size	Modified	=	Modified	Size	Name
\\windsor\c\$\FrontPage Webs\Content\Windsor\_vti_cnf						
download.htm	968	02/07/97 23:28:13	←	03/07/97 01:14:28	968	download.htm
feature.htm	771	02/07/97 23:28:13	←	03/07/97 01:14:28	771	feature.htm
filesync.htm	889	03/07/97 00:57:49	=	03/07/97 00:57:50	889	filesync.htm
filesyncnews.htm	794	03/07/97 00:57:22	←	03/07/97 01:14:28	794	filesyncnews.htm
index.htm	838	03/07/97 00:49:38	=	03/07/97 00:49:38	838	index.htm
javascri.htm	758	30/04/97 11:33:58	←	03/07/97 01:14:28	758	javascri.htm
latest.htm	808	03/07/97 00:56:03	=	03/07/97 00:56:04	808	latest.htm
news.htm	516	03/07/97 00:00:00	?	03/07/97 00:00:00	516	news.htm
register.htm	911	02/07/97 23:28:14	=	02/07/97 23:28:14	911	register.htm
screenshot.htm	784	02/07/97 23:28:14	!	02/07/97 23:28:14	786	screenshot.htm
\\windsor\c\$\FrontPage Webs\Content\Windsor\_vti_shn						
filesync.htm	1,548	03/07/97 00:57:48	→	30/04/97 11:38:20	1,698	filesync.htm
filesyncnews.htm	1,474	03/07/97 00:57:21	→	26/04/97 01:47:18	1,402	filesyncnews.htm
index.htm	1,495	03/07/97 00:49:37	→	30/04/97 12:12:24	1,486	index.htm
latest.htm	785	03/07/97 00:56:02	→			

## Status Bar



30 of 30 file(s) tagged (4.04MB) - Free 27.86MB 51 of 51 file(s) tagged (26.71MB)

The status bar shows file statistics for the source and target paths displayed in the comparison list. The number of files tagged from the number of files in the list is shown as well as the total file size that would be copied during [synchronization](#).

## Time-Stamps

The time-stamps used by FileSync are the last modified dates and times which are maintained by the operating system for each file stored on disk.

Fat file systems, as used by Windows 95, can only store time-stamps to the nearest 2 seconds and this can cause problems when comparing with files stored on an NTFS file system as used by Windows NT4, which maintains time-stamps to an accuracy of milli-seconds.

To handle this problem use the [ignore 2 second time differences](#) file system option.

Additionally, problems may be experienced when trying to synchronize files across different time-zones. FileSync provides the facility to shift the time of the target path. See [the Shift target file times by...](#) file system option.

## Tagging Files

Files can be tagged or untagged by clicking the checkbox on the left-hand side of the comparison list or by use of the space bar when the list entry is highlighted.

You can also tag/untag an entire folder by clicking on the [folder header](#).

Note that tagging is different from [selecting](#).

## Folder Header



The folder header is displayed for each folder that is included in the [comparison list](#).

Clicking on any part of it will [tag/untag](#) all the files within that folder.

A double-click on the header will open an explorer window on the specific folder as long as it exists.

## Path Comboboxes

Source path:  
D:\my data

Target path:  
\\Windsor\d\My Data

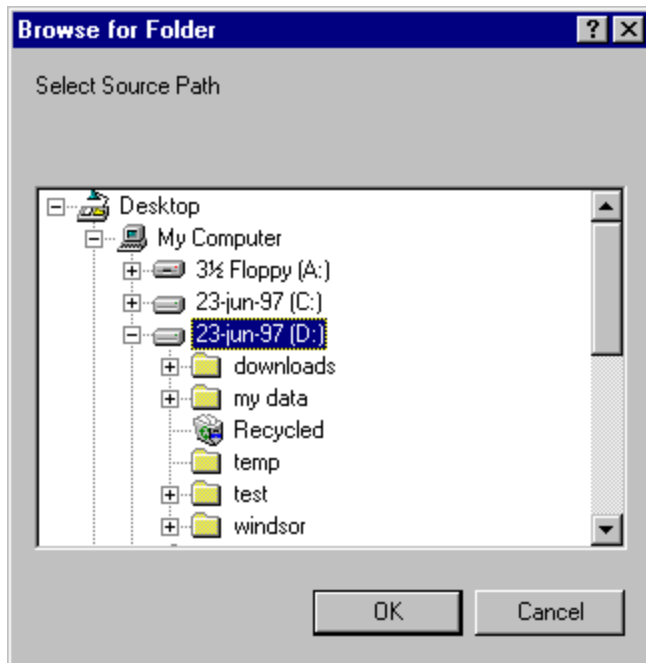
Enter the paths that you are interested in comparing into these two combo boxes. There are three ways to do this:

1. Type a pathname directly into the control.
2. Select a path you have used before from the drop-down [history list](#).
3. Use the [browse](#) button to select a path from all the available resources on your machine or network.

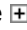
### Notes

FileSync supports both drive letter mappings of the form x:\FolderName where x is a mapped drive letter, and [UNC](#) names of the form \\ComputerName\ResourceName\FolderName.

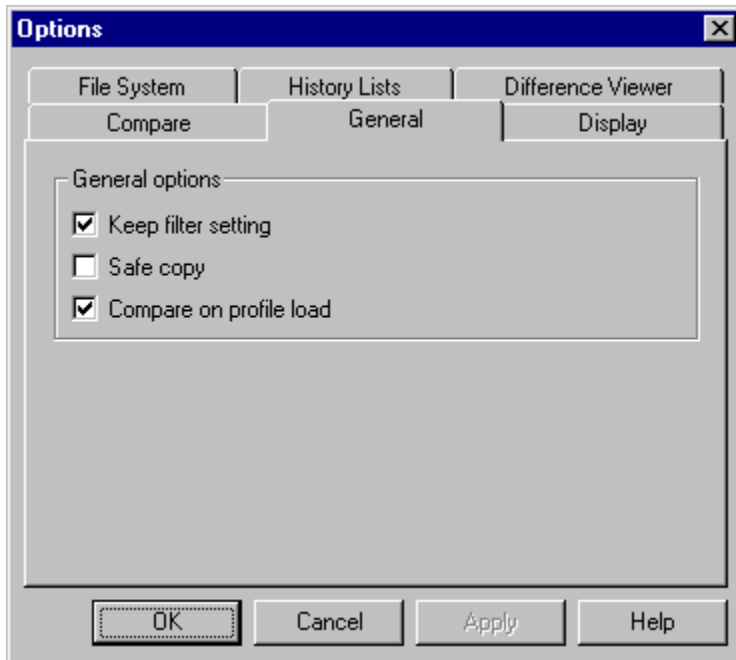
## Browse for folders



To select a folder, double click on the selection.

To expand a branch of the tree, click on the 

## General Options



### **Keep filter setting**

This option, when set, causes the currently selected [filter setting](#) to be retained between sessions.

### **Safe Copy**

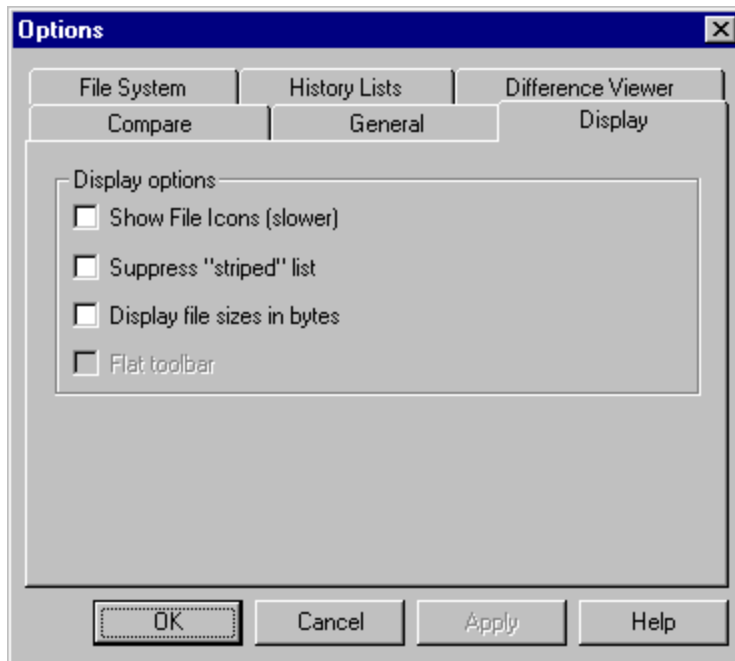
This option, when set, causes the program to write the file being copied to a temporary file and once that operation succeeds the original file will be deleted and the temporary one renamed. If you wish to replace files on a storage device that has limited free space you should leave this option unticked.

### **Compare on profile load**

This option, when set, starts the [compare operation](#) whenever a [profile](#) is loaded from disk. If FileSync is started with a profile specified on the command line then the compare operation will be performed as soon as the program loads.



## Display Options



### Show File Icons

Displays the associated file icon on the left-hand side of the comparison list. Note that this introduces a performance overhead.

### Suppress "striped" list

Switches off the alternating green and white striping in the comparison list. (Cosmetic)

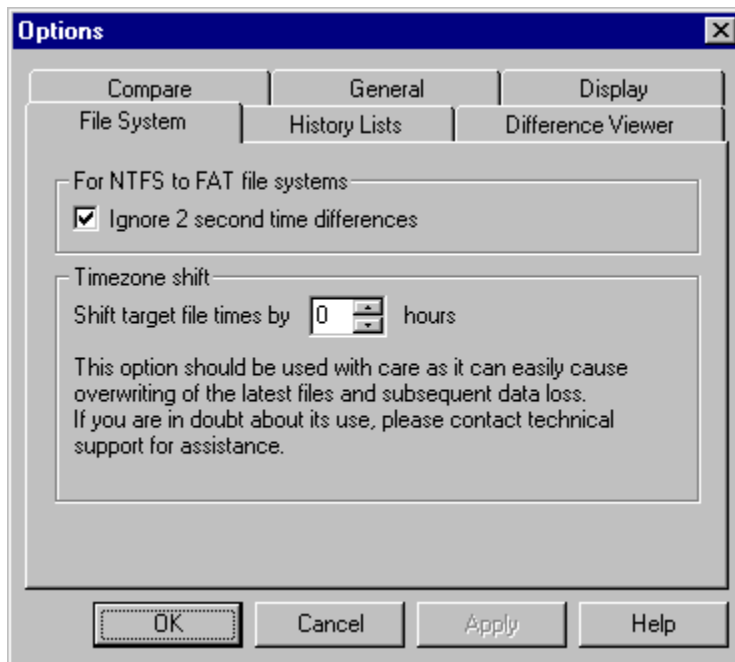
### Display file sizes in bytes

Displays the file sizes in bytes instead of Kilobytes and Megabytes.

### Flat toolbar

Due to potential problems with some versions of the operating system Comctrl32.dll, this option is disabled for the time being. (Cosmetic)

## File System Options



### Ignore 2 second time differences

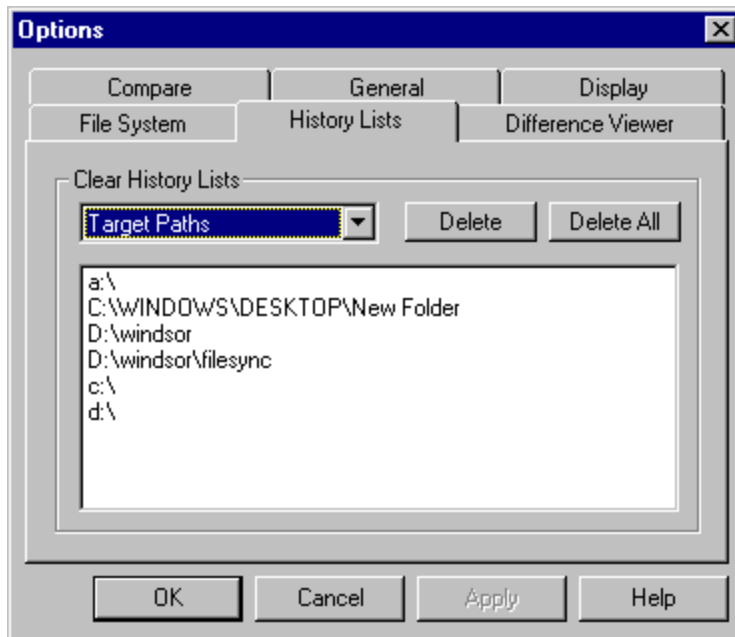
This option forces the program to treat [time-stamps](#) that are within 2 seconds as the same and therefore do not require synchronization. This is to handle the way time-stamps are stored under different file systems.

### Shift target file times by...

This option provides a means to adjust file times across time-zones. The times of all files on the target path will be shifted the specified number of hours, forward or back.

**This option should be used with caution!**

## History List Options



This page allows you to delete entries from any of the four history lists used by the program.

- Source Paths
- Target Paths
- File Types
- Recent Profiles

Select the required history from the dropdown combo box. The entries for that history will now be displayed. Press the "Delete All" button to clear all entries or select the specific entries to be deleted and press the "Delete" button.

## Step by Step

### Step 1.

Enter the [Source](#) and [Target](#) paths that you want to compare. See [Path Comboboxes](#).

### Step 2.

Set the [File Types](#) to be compared. Separate multiple file types with a space.

“\*.exe \*.dll \*.vxd”

### Step 3.

Set the Recurse sub-folders check-box as required.

### Step 4.

From the menu select **File Compare**, the comparison will begin. The [compare](#) can be stopped with the **File Stop** option.

### Step 5.

[Untag](#) any files that you wish to exclude from [synchronization](#).

### Step 6.

From the menu select **File Synchronize**, the [Confirm Synchronize](#) dialog will be displayed.

### Step 7.

Select the directions for copying and set the overwrite and new folder options; Press OK.

## Profiles

Profiles are files that FileSync can use to load and save your current [path](#), [file types list filter](#) and [Folder Include/Exclude](#) settings.

The following options on the **File** menu are used with profiles:

[New Profile](#)

[Open](#)

[Save](#)

[Save As](#)

## **New Profile**



This option clears the comparison list and creates a new profile.

## Open Profile



This option opens an existing profile which has been stored on disk. When the profile is loaded the [Source and Target paths](#) , the [File Types](#) and the [Recurse sub-folders](#) options are set to the saved values.

## Save Profile



This option saves the [Source and Target paths](#) , the [File Types](#) and the [Recurse sub-folders](#) options into the currently open profile.



## Save Profile As

This option saves the [Source and Target paths](#) , the [File Types](#) and the [Recurse sub-folders](#) options into a new profile. A file save dialog box will prompt for a name for this profile.

## Filtering

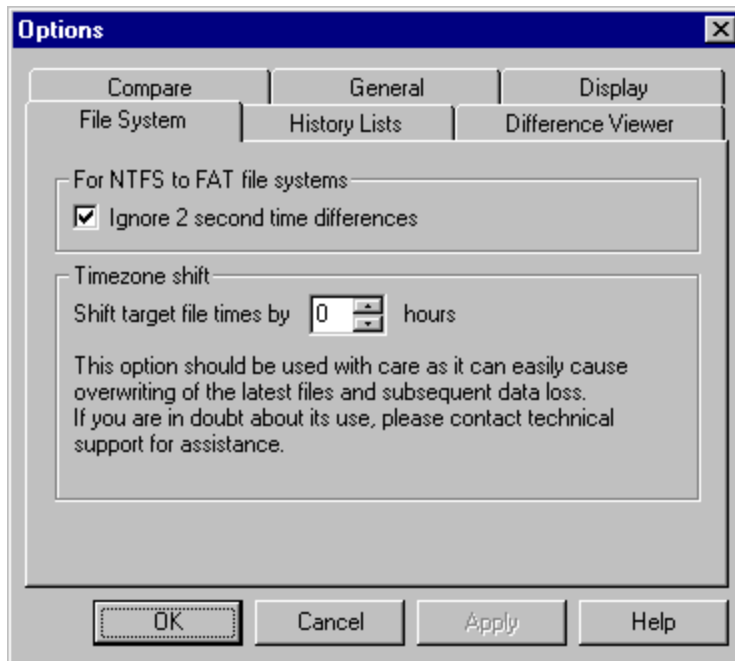


You can apply nine different filtering options to the comparison list:

- All files
- Files requiring [synchronization](#)
- Files to copy from [source](#) to [target](#)
- Files to copy from [target](#) to [source](#)
- Files with matching [time-stamps](#)
- Files that exist on both paths
- Files that exist on one path only
- Files with the same time-stamps but different sizes
- Files with the same time-stamps and sizes but with [binary differences](#)

The currently selected filter setting can be made persistent with the “Keep filter setting” in the [General options](#).

## Target path



The target is the path displayed on the right-hand side of the [comparison list](#).

## Comparison list

The comparison list displays the files from the [source](#) and [target](#) paths.

Name	Size	Modified	=	Modified	Size	Name
\\windsor\c\$\FrontPage Webs\Content\Windsor\_vti_cnf			d:\FrontPage Webs\Con...			
<input checked="" type="checkbox"/>	968	02/07/97 23:28:13	←	03/07/97 01:14:28	968	download.htm
<input checked="" type="checkbox"/>	771	02/07/97 23:28:13	←	03/07/97 01:14:28	771	feature.htm
<input type="checkbox"/>	889	03/07/97 00:57:49	=	03/07/97 00:57:50	889	filesync.htm
<input checked="" type="checkbox"/>	794	03/07/97 00:57:22	←	03/07/97 01:14:28	794	filesyncnews.htm
<input type="checkbox"/>	838	03/07/97 00:49:38	=	03/07/97 00:49:38	838	index.htm
<input checked="" type="checkbox"/>	758	30/04/97 11:33:58	←	03/07/97 01:14:28	758	javascri.htm
<input type="checkbox"/>	808	03/07/97 00:56:03	=	03/07/97 00:56:04	808	latest.htm
<input type="checkbox"/>	516	03/07/97 00:00:00	?	03/07/97 00:00:00	516	news.htm
<input type="checkbox"/>	911	02/07/97 23:28:14	=	02/07/97 23:28:14	911	register.htm
<input type="checkbox"/>	784	02/07/97 23:28:14	!	02/07/97 23:28:14	786	screenshot.htm
\\windsor\c\$\FrontPage Webs\Content\Windsor\_vti_shn			d:\FrontPage Webs\Con...			
<input checked="" type="checkbox"/>	1,548	03/07/97 00:57:48	→	30/04/97 11:38:20	1,698	filesync.htm
<input checked="" type="checkbox"/>	1,474	03/07/97 00:57:21	→	26/04/97 01:47:18	1,402	filesyncnews.htm
<input checked="" type="checkbox"/>	1,495	03/07/97 00:49:37	→	30/04/97 12:12:24	1,486	index.htm
<input checked="" type="checkbox"/>	785	03/07/97 00:56:02	→			latest.htm

## Stop



The File Stop option will terminate the currently running file comparison.

## Toolbar

Click on a button for further information.



**Select all**

The Select all option will [select](#) all files that are currently displayed in the [comparison list](#).

## Tag All



[Tags](#) all files that require [synchronization](#).

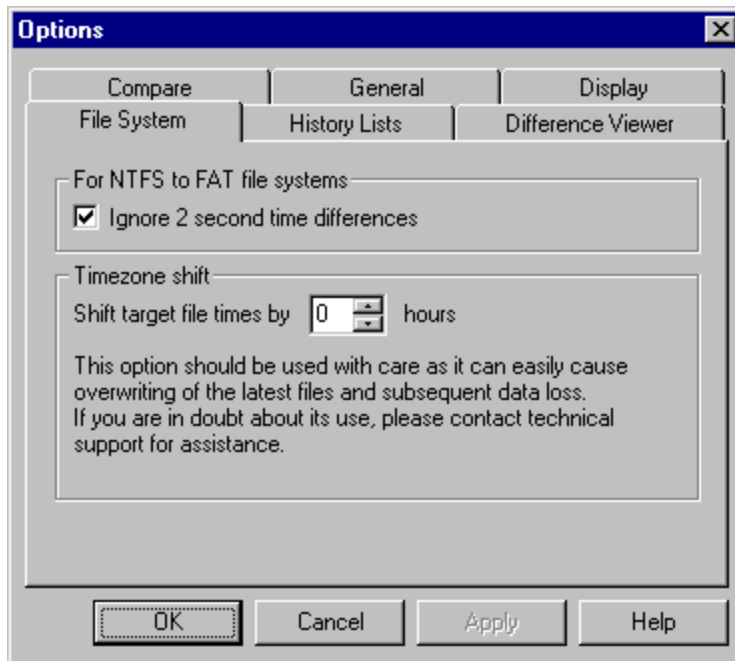


## Untag All



Untags all files in the [comparison list](#).

## Source path



The source is the path displayed on the left-hand side of the [comparison list](#).

## Synchronize



When file synchronize is selected the [tagged](#) files on both paths are copied in the direction specified in the [compare list](#).

The time taken for the compare depends on two main factors. The number of files that match the [file types](#) criteria and the speed of the connections to the source and target paths. Paths on local hard drives will obviously be fastest whereas paths being accessed over a dial-up networking connection will be slowest.

## Print



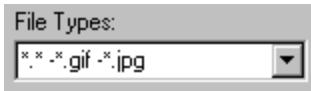
This option will print the current contents of the [comparison list](#) to a selected printer.

## **Print Preview**



This option displays each page as it will look when printed.

## File Types



The image shows a small window titled 'File Types:'. Inside the window is a text input field containing the file type specifications '\*.\* \*.gif \*.jpg'. To the right of the input field is a small downward-pointing arrow, indicating a dropdown menu.

Enter the criteria for files that will be included in the comparison. You can specify any file specification you like such as \*.\* or \*.exe. If you want to include more than one type of file enter multiple file specifications separated with a space. e.g. \*.bmp \*.wmf \*.gif \*.jpg

## Excluding Files

Files can be excluded from the comparison by specifying a file type with a '-' (minus sign) as a prefix.

*For example:*

The file specification \*.b\* -\*.bak would include all files whose extensions started with **b** except for files with a **bak** extension.

The file specification \*.\* -a\*.\* -\*.z\* would include all files except for those with a name beginning with **a** or with an extension beginning with **z**.

## Recurse sub-folders

Recurse sub-folders

The recurse sub-folders option controls whether files in sub-folders of the selected paths will be included in the comparison. For instance, if the paths are set to the root directory of a drive then, with this option set, all files that match the specified [file types](#) will be displayed in the [comparison list](#).

## Hints and Tips

You can make a complete copy of a folder tree including whatever files you specify by setting either source or target to a non-existent folder. When you run the compare FileSync will show all the files in the list as needing to be copied. On the synchronize operation make sure confirm new folders option is off and FileSync will copy all the files and create all the necessary new folders in one step.

For best performance over slow networks and dial-up connections make sure that the “Display File Icons” option is off. FileSync doesn’t store the icons as part of the list and therefore needs to re-read them from the disk each time an icon is displayed.

Create shortcuts to your FileSync profiles and put them in a separate folder on the desktop. A double click on any shortcut will launch FileSync and load the required profile.



## Version Information

Version	Released	Details
2.02	June 1998	See <a href="#">What's new</a>
2.00	June 1998	
1.55	February 1998	
1.54	February 1998	
1.53	October 1997	Limited distribution
1.52	August 1997	
1.50	July 1997	
1.42	May 1997	Problem with creating new folders on UNC targets under Windows 95 fixed. Splash screen removed for registered users
1.4	April 1997	Synchronisation engine redesigned to work with IE4 desktop integration. Now runs under NT 3.51 (with some limited functionality) Multi-threading re-introduced and enhanced to improve interface response. Source, target and type combo boxes now support Cut, Copy, Paste and undo. Free disk space displayed for Source and Target paths.
1.31	February 1997	Problem with filenames starting with "." (a period) fixed. Filter setting is now optionally persistent. File type exclusions now supported. Focus set to file list after a compare.
1.3	December 1996	First registerable release version.
1.2	October 1996	A series of betas to exorcise the bugs
1.1	March 1996	Sub-folder recursion added
1.0	December 1995	First release

## **Future Enhancements and Features**

Development of this product is on-going and there is always a list of new enhancements and features to be provided at some point. Feedback and suggestions for the product are always welcome.

## Support

Support is available by email from [support@fileware.co.uk](mailto:support@fileware.co.uk). Priority will be given to registered users but all users will receive support.

## File Compare



When file compare is selected the specified files on both paths are compared and a list is displayed which shows whether files have equal [timestamps](#) or not and if so which direction they need to be copied to [synchronize](#) the two paths.

The time taken for the compare depends on two main factors. The number of files that match the [file types](#) criteria and the speed of the connections to the [source and target paths](#). Paths on local hard drives will obviously be fastest whereas paths being accessed over a dial-up networking connection will be slowest.

## File Binary Compare

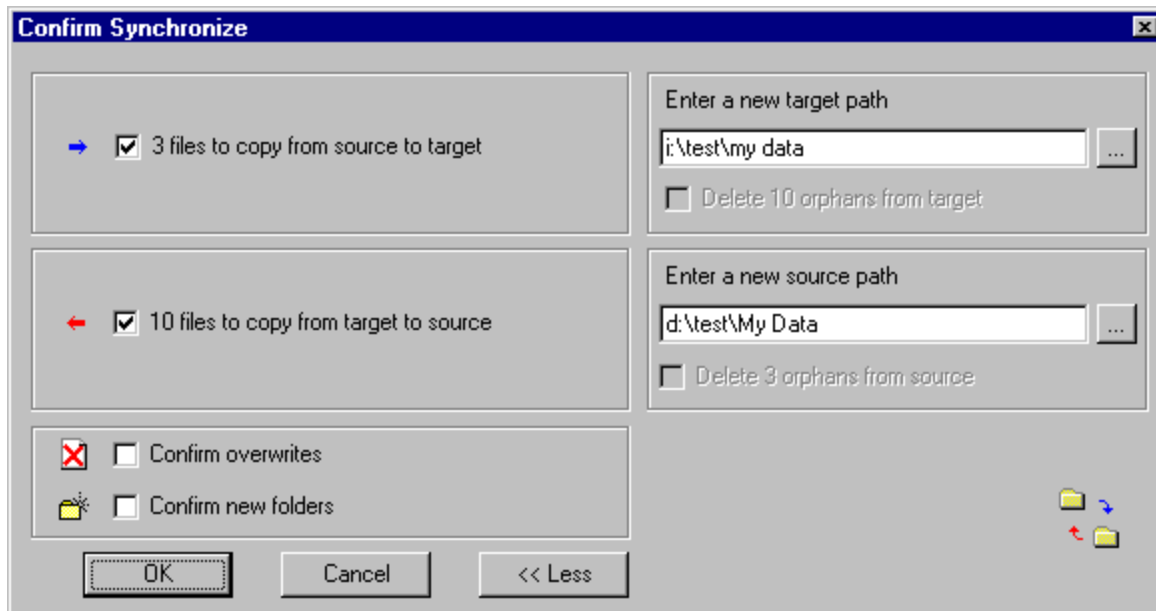


When binary compare is selected the specified files on both paths are compared, byte by byte and a list is displayed which shows whether files are equal or not. See [Tools, Options, Compare](#) for settings which effect the behavior of the comparison.

The time taken for the compare depends on two main factors. The number of files that match the [file types](#) criteria and the speed of the connections to the [source and target paths](#). Paths on local hard drives will obviously be fastest whereas paths being accessed over a dial-up networking connection will be slowest.

Note that binary compares can take a considerable length of time especially if the files are identical.

## Confirm Synchronize

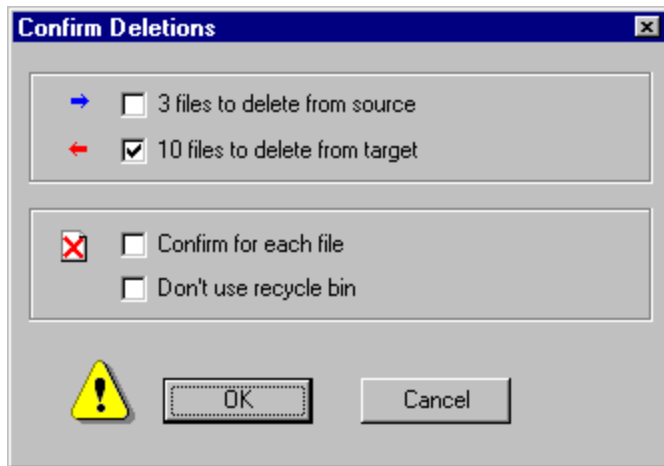


This dialog allows you to specify in which direction you would like to copy files and also provides options to confirm when files will be overwritten and new folders will be created.

Only files that are [tagged](#) will be copied and, by default, copied files will overwrite those on the destination and new folders created when required.

An option is also provided to change the destination for the copying so that the files being synchronized can be copied to a different path. Note that if you change these paths then the files will still show as requiring synchronization in the comparison list.

## Confirm Deletions



This dialog allows you specify whether selected files are deleted from the source , target or both paths.

## Options



From Tools options a dialog is displayed which provides access to the settings that are used each time FileSync is run. This means that these settings are not saved in the profiles but in the [Windows](#) registry and therefore do not change when another [profile](#) is loaded.

The options are divided into six groups as follows:

[General](#)

[Display](#)

[File System](#)

[History Lists](#)

[Difference viewer](#)

[Compare](#)



## Context menu

Open file on source	
Open file on target	
Delete Selected Files	Del
Tag Selected Files	
Untag Selected Files	
Reverse Copy Direction	
Set copy direction	▶
Binary Compare	
Display Differences	

The context menu is displayed by right-clicking on the [comparison list](#) and the options available only operate on [selected](#) files.

## Reverse Copy Direction

This option allows you to reverse the copy direction of selected files. This means that you can force the program to copy the older file over the more recent. Files that have had their copy direction reversed are shown with a copy direction arrow that is a different colour to their text.

### Note

This option should be used with care as the more recent copy of the file will be overwritten and lost.

## Deleting Files

This option allows you to delete [selected](#) files from either the source path, target path or both. Before the actual deletion takes place you are asked to confirm the operation by the [Confirm Deletions](#) dialog.

### Note

Deleting files may cause loss of data so use this option with care! If the files being deleted are on a local disk drive they will be sent to the recycle bin.

## Selecting files

Selected files are different from [tagged](#) files. Selected files are those that are highlighted in the [comparison list](#). The [context menu](#) options operate on **only** the selected files.

All the files in the list can be selected from the **Edit** menu **Select All** option.

## **Disclaimer and other legal stuff**

### **LIMITED WARRANTY AND REMEDIES**

THE PROGRAM IS PROVIDED "AS IS" WITHOUT WARRANTY OF ANY KIND, EITHER EXPRESS OR IMPLIED, INCLUDING, BUT NOT LIMITED TO WARRANTIES OF MERCHANTABILITY OR FITNESS FOR A PARTICULAR PURPOSE. IN NO EVENT WILL THE [AUTHOR](#) BE LIABLE TO YOU FOR ANY DAMAGES, INCLUDING INCIDENTAL OR CONSEQUENTIAL DAMAGES, ARISING OUT OF THE USE OF THE PROGRAM, EVEN IF ADVISED OF THE POSSIBILITY OF SUCH DAMAGES.

YOU ACKNOWLEDGE THAT YOU HAVE READ THIS LICENSE, UNDERSTAND IT AND AGREE TO BE BOUND BY ITS TERMS AS THE COMPLETE AND EXCLUSIVE STATEMENT OF THE AGREEMENT BETWEEN US, SUPERSEDING ANY PROPOSAL OR PRIOR AGREEMENT, ORAL OR WRITTEN, AND ANY OTHER COMMUNICATIONS BETWEEN US RELATING TO THE SUBJECT MATTER OF THIS LICENSE.

## **The author**

You can contact the author, Tim Coates, via email at [tim@fileware.co.uk](mailto:tim@fileware.co.uk) or [coates@compuserve.com](mailto:coates@compuserve.com).

## **UNC**

Universal Naming Convention. A standard naming convention used by [Windows 95](#) , [Windows NT](#) and other operating systems which takes the form:

`\\ComputerName\ResourceName\FolderName`

## **Windows Operating Systems**

Windows 95, Windows 98 and Windows NT are trademarks of the Microsoft Corporation and if I don't mention this, their lawyers might get cross with me.

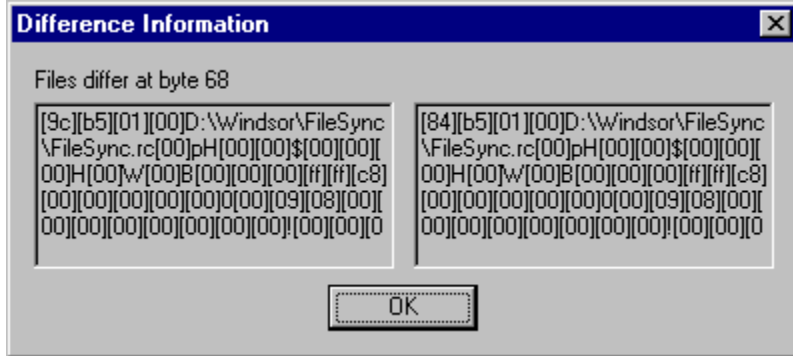


## **NT 3.51 Support**

Window NT 3.51 is now supported but with limited functionality. The “browse for folders” buttons don’t work.

## Binary compare

Files can be optionally compared on a binary basis. This means that the files are compared byte by byte until either there is a mismatch or the end of file is reached. Running a binary compare confirms that two files are absolutely identical regardless of their modification date and time.



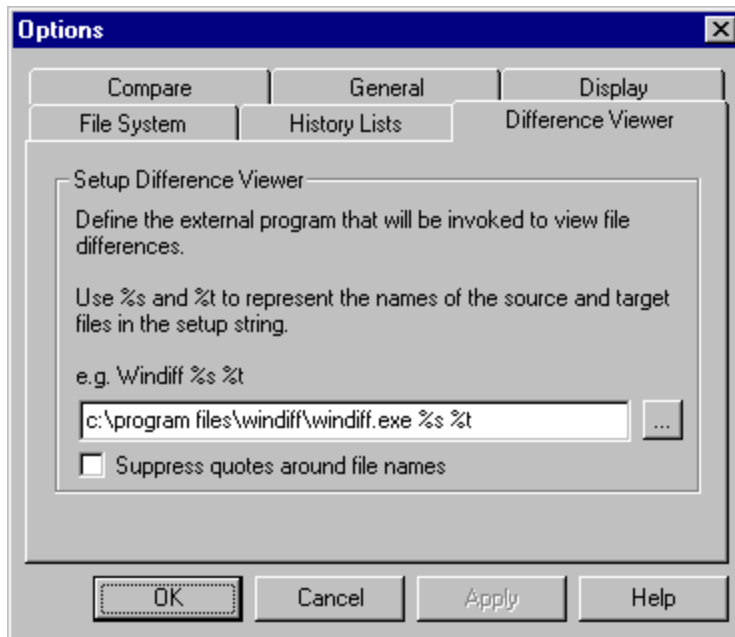
The difference information dialog shows the contents of the two files from the point where the first difference is found. Non-printable characters are displayed as their hexadecimal values in-between square brackets.

## **File size compare**

For files that have matching timestamps, the file sizes can be optionally compared. There is a [filter](#) to display only files that have matching [timestamps](#) but different sizes.

The compare file sizes option is set in the [Tools, options, compare](#).

## Difference Viewer



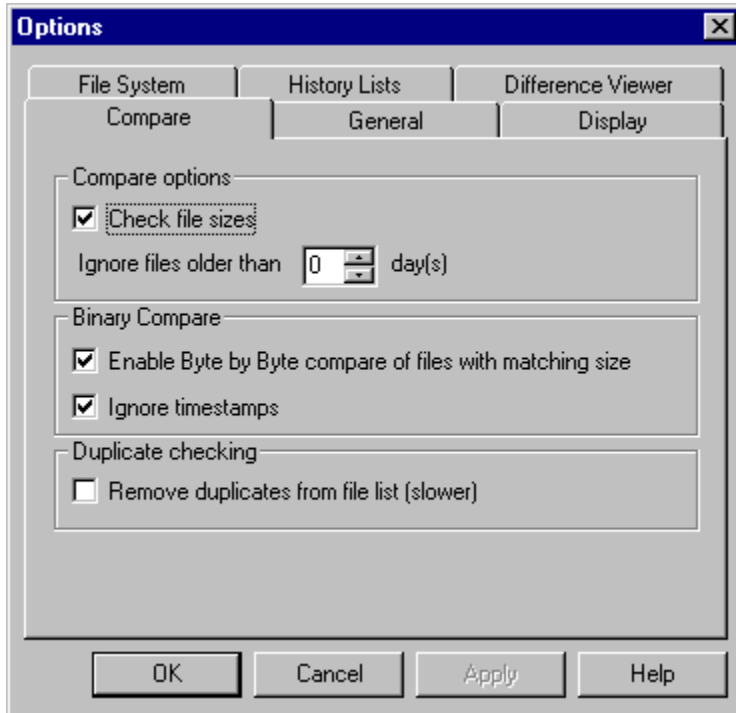
There are several freeware and shareware difference viewers available as well as Microsoft's offering, Windiff.

This option page allows you to setup your preferred difference viewer which is invoked from the "Display Differences" option on the [file list context menu](#).

### **Suppress quotes around file names**

Some programs won't work if you pass the parameters in quotes on the command line. Use this option to suppress the quotes. Note, however, that such programs will also not work if the path or file name contains embedded spaces.

## Compare options



### Check file sizes

This option controls whether file sizes are checked when a comparison is run. Only files with the same time-stamp are checked.

### Ignore files older than...

This option excludes files from the compare that are older than the specified number of days. When set to 0 days no files are excluded.

If there is a number of days set a reminder is displayed in the [status bar](#).

### Binary compare

If this option is set, files with the same size and time-stamp will be compared on a byte by byte basis. Note that enabling this option may severely degrade the performance of the compare operation.

### Ignore timestamps

This option works in conjunction with binary compares and controls whether files with different time-stamps are compared on a byte by byte basis.

Note:

If you want to do a binary compare of individual files this option is available on the [context menu](#).

### **Remove duplicates from file list**

This option provides checking for duplicates and suppressing the display of them in the file list. Duplicates may appear when using multiple file types. For example:

A file type specification of \*.\*\*.bak would result in all files with a bak extension appearing twice in the file list.

Use of this option results in more processing during the compare operation and consequently a degradation of performance.

## Association of Shareware Professionals



FileWare is a member of the Association of Shareware Professionals (ASP).

The primary goals of the ASP include:

- To inform users about shareware programs and about shareware as a method of distributing and marketing software.
- To foster a high degree of professionalism among shareware authors by setting programming, marketing, and support standards for ASP members to follow.
- To encourage broader distribution of shareware through user groups and disk dealers who agree to identify and explain the nature of shareware.
- To assist members in marketing their software.
- To provide a forum through which ASP members may communicate, share ideas, and learn from each other.

The Association of Shareware Professionals have drafted a code of ethics for all present and future members. This code of ethics includes the following requirements:

- A member's program (evaluation version) must not be limited (crippled) in any way. In the true spirit of Try-Before-You-Buy, users must be able to evaluate all the features in a program before paying the registration fee.
- Members must respond to every registration. At the very least they must send a receipt for the payment.
- Members must provide technical support for their products for at least 90 days from the date of registration.

The ASP has put in place a system to help ensure that users are treated fairly and professionally. If a user is unable to resolve a problem with a member author then the user can contact the ASP Ombudsman with their complaint. The Ombudsman will then try to help resolve the dispute.

ASP Ombudsman Statement:

FileWare is a member of the Association of Shareware Professionals (ASP). ASP wants to make sure that the shareware principle works for you. If you are unable to resolve a shareware-related problem with an ASP member by contacting the member directly, ASP may be able to help. The ASP Ombudsman can help you resolve a dispute or problem with an ASP member, but does not provide technical support for members' products.

Please write to the ASP Ombudsman at:

ASP Ombudsman  
545 Grover Road

Muskegon, MI 49442-9427  
U.S.A.

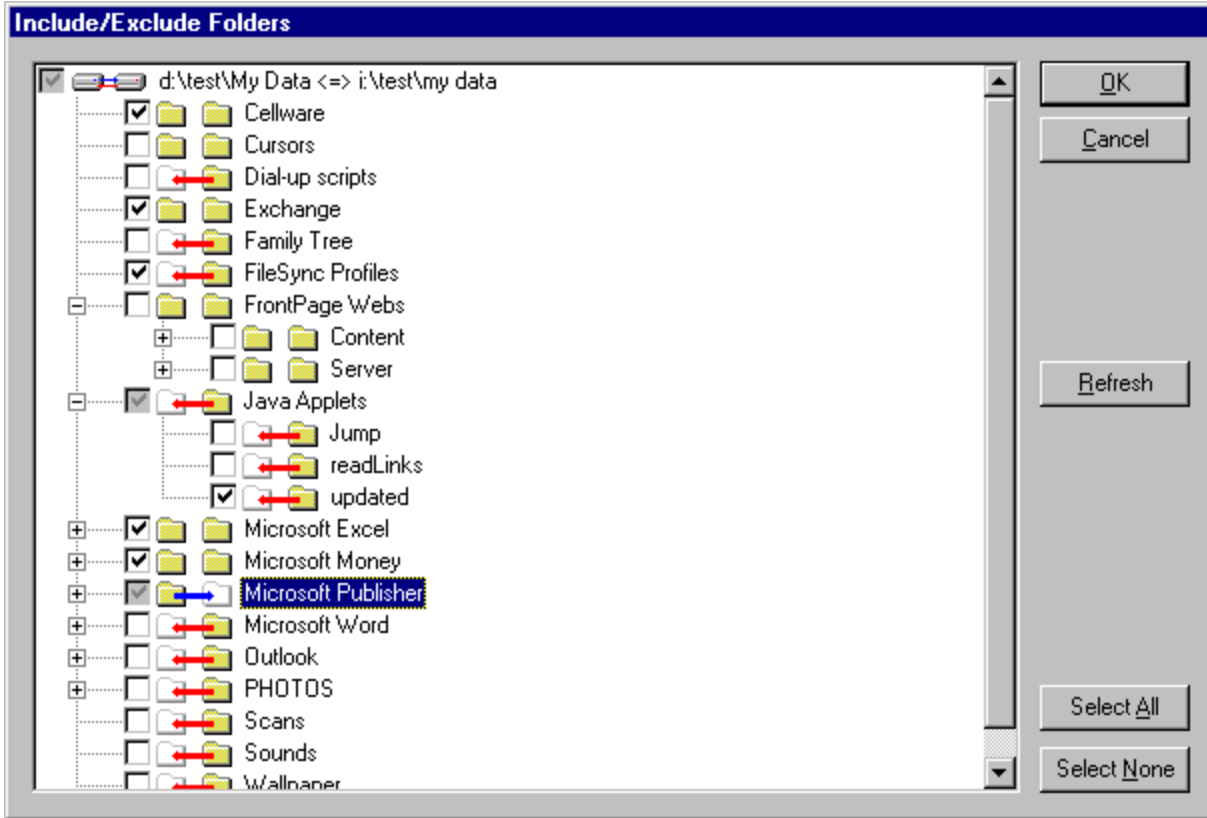
or send a message via e-mail to ASP Ombudsman, [70007.3536@compuserve.com](mailto:70007.3536@compuserve.com).




## **Tools Include/Exclude Folders**

See [Include/Exclude Folders](#) for details.

## Include/Exclude Folders






Selection of the Tools, Exclude folders option or pressing the  button will bring up the Include/Exclude Folders dialog. The first time you do this FileSync will read the folders from both paths and build a tree which shows the relationship of folders between the two paths.

This list will be saved with the profile and will not be refreshed from disk unless the refresh button is pressed. When refreshed, any existing selections will be retained and any new folders will automatically be selected for inclusion.

When a [File Compare](#) is run FileSync always checks all folders and sub-folders to ensure that any new folders are included in the list. If you need to exclude any new folders go back into the Include/Exclude dialog, refresh the list and then untick the required exclusions.

What the icons mean:

-  Folder exists on both paths
-  Folder exists on source path only
-  Folder exists on target path only

What the tickboxes mean:

- This folder and all its sub-folders are included
- Neither this folder nor any of its sub-folders are included
- This folder is included and some, but not all, of its sub-folders may be included
- This folder is not included but some or all of its sub-folders are included

Note that the folder exclusion list is saved in the profile to disk. There is no default exclusion list.



## **You should register!**

Only through your support can we continue to provide high-quality software at reasonable prices. We don't charge for upgrades and we don't charge for technical support unlike some software suppliers. (Names omitted to avoid potential law suits).

Where else can you get quality products, FREE upgrades and FREE support? Only in the shareware sector, that's where! So support shareware developers and pay the registration fee for those products that that you continue to use after the evaluation period.

Thanks for your support.

[How to register](#)

